

INDIAN SCHOOL SOHAR  
FORMATIVE ASSESSMENT III: 2013 -2014

No.of printed Pages: 4  
SET I

Std. : X

Date: 7/11/ 2013

ENGLISH

Marks : 25

Time : 45 Min

---

GENERAL INSTRUCTIONS:

- This paper consists of four sections:  
Section A – Reading (5Marks)  
Section B – Writing (7Marks)  
Section C – Grammar (5Marks)  
Section D – Literature (8Marks)  
All sections are compulsory.
  - Separate instructions are given for each section and question wherever necessary. Read the instructions carefully and follow them.
- 

SECTION A : READING

(5)

I. Read the following passage and answer the questions given below it:

**Image**

On the door step of the temple  
Under the hot sun  
I see her every day.  
Her hands and feet are  
Withered like limbs of a dead tree.

Her eyes tired of searching  
For rays of hope  
Are sunk deep like caves  
In a rock.  
Neither they receive light  
Nor give it.

Her three yard saree  
Has torn in thirty places  
Her body has absorbed  
Sixty years of dirt.

Her knotty matted hair  
Is the abode of worm and lice  
Here and there some black teeth,  
Stand as guards in her open mouth.  
The lines on her face  
Have spread far and deep  
Like the crow's feet.

Raising her shaking hands  
With hope in her eyes  
She looks at me  
And an electric current joins together our two hearts  
Time goes back fifteen years.  
Her face changes, her eyes twinkle  
When she smiles her teeth dazzle  
In that one magic moment,  
I see the image of my dead mother.

a. **Answer the following questions.** (3)

- i. Where does the poet see her?
- ii. What has happened to her hands and feet?
- iii. What do her eyes search for?

b. **Choose the right answers from those given in brackets.** (2)

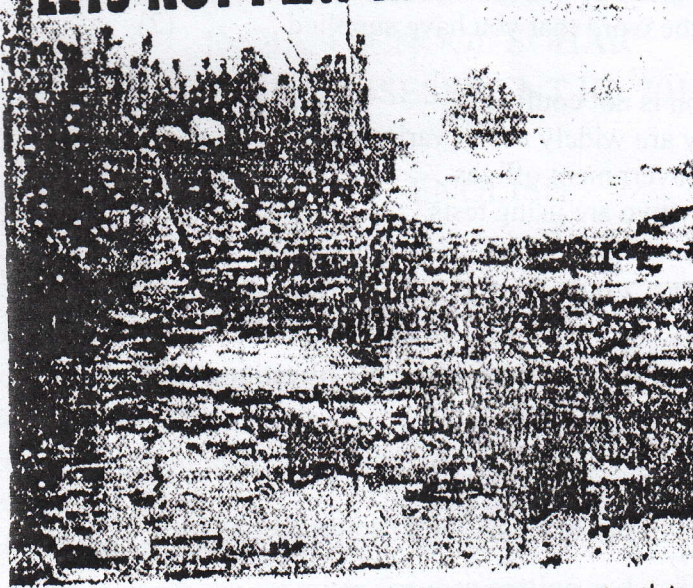
- i. The word 'abode' means \_\_\_\_\_  
1. similar 2. home 3. school 4. nest
- ii. She looks at the poet with \_\_\_\_\_  
1. Electric current 2. twinkle 3. hope 4. magic

**SECTION B : WRITING** (7)

- II. Susheel thinks of writing an **article to express his concern for the river pollution** that is taking place near the city. With reference to news item together with your own ideas write the **article** for Susheel in about **150** words. (7)

## LET'S NOT PLAY HAVOC WITH OUR LIFE-LINE

New Delhi 14 Jan. :



The untreated Yamuna water which Delhi receives is not fit for human consumption; it is filled with huge numbers of bacteria, according to a survey conducted by the Central Pollution Control Board.

Can you see the Yamuna in this picture ?

### Don't clog the Yamuna, it is our city's lifeline

#### STOP THROWING GARBAGE IN DRAINS

*Purify Rivers for a healthy life.*

#### SECTION C: GRAMMAR

(5)

III. Complete the news reports accompanying the following headlines.

(a) Two Killed in Blue Line Accidents

\_\_\_\_\_ buses here on Monday, one, an 18 year old girl and the other, a cyclist.

- i. Two people were killed in an accident caused by Blue Line
- ii. Two men were killed in an accident caused by Blue Line
- iii. Two people had been killed in an accident caused by Blue Line
- iv. Two people were killed in a Blue Line accident

(b) Assam Seeks CBI Probe

The Assam government today \_\_\_\_\_ into the violence during the anti reservation rally last week.

- |                            |                           |
|----------------------------|---------------------------|
| i. has sought a CBI probe  | iii. sought a CBI probe   |
| ii. had sought a CBI probe | iv. will seek a CBI probe |

(c) Two Die of Burns

Two senior executives of Baranagar Jute Factory \_\_\_\_\_ in the factory premises.

- |                           |                        |
|---------------------------|------------------------|
| i. Has been died of burns | iii. will die of burns |
| ii. Were died             | iv. died of burns      |

- IV. The following passage has **not been edited**. There is one error in each of the lines. Write the **incorrect word and the correction** in your answer sheet against the correct blank number. **Underline** the word that you have supplied (2)

Tests and examination is not confined (a) \_\_\_\_\_  
to school alone. They are widely use in various (b) \_\_\_\_\_  
government or non-government offices. (c) \_\_\_\_\_  
Business and industry two are using tests. (d) \_\_\_\_\_

**SECTION D : LITERATURE**

(8)

- V. **Read the extract given below and answer the questions that follow.** (2)  
"Well, I was not in a position to contradict Jenkins."

- a. Why was the narrator not in a position to contradict Jenkins ?  
b. Who was Jenkins ?  
c. What had Jenkins asked the narrator to do ?  
d. Who helped him in performing the given task?

- VI. **Answer the following questions in about 40 words:** (4)

- a. Why does the narrator hesitate to be a partner to Laura Hinkle during the Ouija Board Party?  
b. What was written on the pedestal of the statue of Ozymandias? What does it tell us about his character?

- VII. **Answer the following question in about 60 words:** (2)

- a. Who was Mr. Irons? How did he prove to be helpful to Helen?

\*\*\*\*\*