



# INDIAN SCHOOL SOHAR SULTANATE OF OMAN EVALUATION SCHEME 2026-27 CLASSES I & II

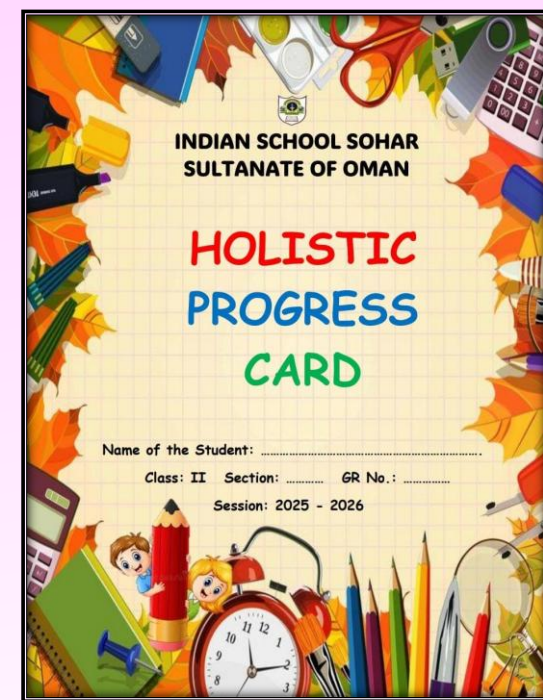


# OUR AIM- HOLISTIC DEVELOPMENT OF THE CHILD



# HOLISTIC PROGRESS CARD (HPC)

- **What is a Holistic Progress Card (HPC)?**
- **A Holistic Progress Card (HPC) is an important initiative introduced by CBSE under the National Education Policy (NEP).**
  - **It helps track a child's progress in many areas, giving parents, teachers, and students a clearer picture of their strengths and areas for improvement.**
  - **This ensures that students are not just good at exams, but also well-prepared for future challenges in life and work.**



# HOLISTIC PROGRESS CARD



## ➤ Aims of HPC

- It aims to shift from traditional exam-based assessments to a system that supports all-round development.
- It assesses students' academic performance as well as their overall growth.
- It focuses on both academic and non-academic skills, such as **creativity, critical thinking, emotional development, and social skills.**
- This approach helps students to grow in a balanced manner, preparing them for life beyond school.

# HOLISTIC PROGRESS CARD

## ➤ Key Components of HPC

All about me

Name:

Date of birth:  Weight:  Height:

Father's name:

Mother's name:

My favourite:

Colour:


Food:

Game:

Pet/Toy:

My hobbies:

When I grow up, I want to be a




A glimpse of myself

Photo:

A glimpse of my family

Note: Paste a photo or draw a picture of you and your family in the given space above.

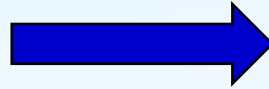


- Scholastic Performance: Subject-wise academic progress
- Co-Scholastic Areas: HPE, Music, Art and extracurricular activities
- Life Skills & Values: Leadership, teamwork and emotional intelligence

# HOLISTIC PROGRESS CARD

## ➤ Key Components of HPC

- Teacher's Observations



- Parent's Feedback



### Learner's profile by the teacher

Teacher must present a narrative summary of the child, highlighting the strengths, challenges and suggestions for improvement.

Term 1: \_\_\_\_\_

\_\_\_\_\_

\_\_\_\_\_

\_\_\_\_\_

Term 2: \_\_\_\_\_

\_\_\_\_\_

\_\_\_\_\_

\_\_\_\_\_

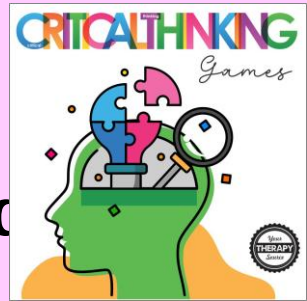
### Parent's feedback

Aspect	Term 1	Term 2
My child enjoys participating in...		
My child can be supported for...		
I would also like to share		
Have I completed age-appropriate vaccination schedule for my child?		

# CURRICULUM & ASSESSMENT

## ➤ How will the child be assessed?

- ❖ The child will be assessed across multiple domains, each of which targets specific areas of growth and development.
- Physical Development- Gross motor skills, fine motor skills and overall physical coordination
- Cognitive Development- The ability to think, reason, and understand concepts such as problem-solving, and logical thinking.
- Socio-emotional Development- The ability to interact with others, manage emotions, and demonstrate empathy, as well as self-regulation skills.



# CURRICULUM & ASSESSMENT

## ➤ How will the child be assessed?

- Language & Literacy Development- The development of language skills, including speaking, listening, reading, and writing.
- Aesthetic Development- The child's ability to engage in and appreciate artistic and creative activities, such as painting, drawing, and crafting.
- Cultural Development- Understanding cultural practices, traditions, and diversity.
- Positive learning habits- Building good habits such as sharing, caring, punctuality, obedience, cleanliness, and completing assignments on time.



# Curriculum & Assessment



## ➤ How will the child be assessed?

❖ Scholastic subjects will be assessed on a daily basis through a variety of methods like **general observations, worksheets hands-on activities, poem recitation, storytelling, role-plays, and short written or oral assessments conducted in class.**

- The child will also be assessed subject-wise in Languages (English & Hindi), Math & EVS through written tests.
- No retests will be conducted.
- The academic session will be divided into 2 terms.

**Term-I : April 2026 - September 2026**

**Term-II : October 2026 - March 2027**

**Written test (20 marks)**

**Written test (20 marks)**

- Time-Table and portion for Term-1 & 2 exams will be given 15 days prior to the test.

# CURRICULUM & ASSESSMENT



## ➤ How will the child be assessed?

### ❖ Co-Scholastic Subjects:

#### ✓ Computer Science

- Class I- Assessment will be based on **Lab Activities** done during Computer Science periods.
- Class II- Assessment will include **Lab Activities & E-Tests** during Computer Science periods.

Class-II	
E-Test based on theory	<b>20 marks</b>

### ❖ E-Test (Class II)

- There will be 20 questions of 1 mark each on 20 different slides. Students have to click the correct answer.
- The test will be conducted during their Computer period. Portions and date of test will be given 15 days prior to the test.

# CURRICULUM & ASSESSMENT

## ➤ How will the child be assessed?

- ✓ Art, Music & HPE will be assessed on a daily basis through **general observations** and **activities** done during school hours.



# STUDENT'S PROGRESS



➤ Based on the observation, teacher will assess the child's progress of learning at different levels: **Beginner**, **Progressing** and **Proficient**.

## ➤ DESCRIPTION OF LEARNERS-

<u>LEVEL</u>	<u>INTERPRETATION</u>	<u>ICONS</u>
<b>Beginner</b>	<b>Tries to achieve the competency and associated Learning Outcomes with a lot of support from teachers.</b>	★
<b>Progressing</b>	<b>Achieves the competency and associated Learning Outcomes with occasional/some support from teachers.</b>	★ ★
<b>Proficient</b>	<b>Achieves the competency and associated Learning Outcomes on his/her own.</b>	★ ★ ★

Parents' co-operation is expected  
and highly appreciated.

*Thank  
you*