



INDIAN SCHOOL SOHAR

EVALUATION SCHEME

CLASS X

SESSION 2026-27



SCHOLASTIC AREA

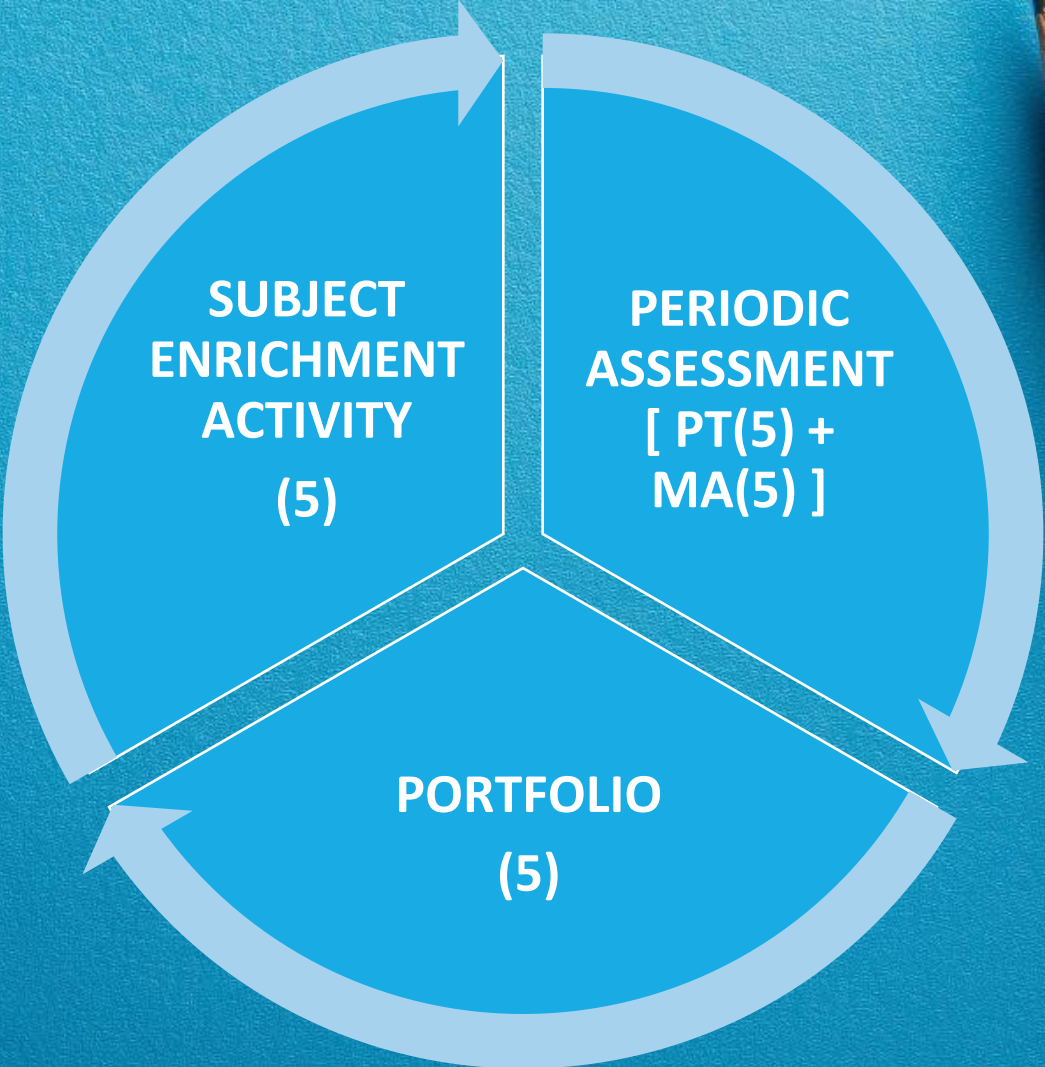
The Scholastic Area comprises of Internal Assessment & Annual / Board Exam.

$$\begin{array}{l} \text{Internal assessment} \\ (20) \end{array} + \begin{array}{l} \text{Annual / Board examination} \\ (80) \end{array} = 100$$



INTERNAL ASSESSMENT

20 MARKS




MULTIPLE ASSESSMENT

MA (5 Marks)

English	10 Questions: Multiple Choice /one word/fill ups etc.
Hindi/Arabic/ Malayalam	10 Questions: Multiple Choice/one word/fill ups/crossword puzzles etc.
Mathematics	Art Integrated Project (Sketching from nature & surroundings)
Science	Art integrated: X - Bio Art
Social science	10 Questions: Multiple Choice/ One Word/fill ups etc.



SEA



Subject	Activity
English	ASL
Hindi/Arabic/Malayalam	ASL
Science	Lab Activity
Mathematics	Lab Activity
Social Science	Project work

PORTFOLIO

PORTFOLIO ASSESSMENT (5 marks)

- The classwork and homework assignments that include notebooks, worksheets, concept maps, art-integrated activities, workbooks, etc. will be assessed based on the following criteria:
- Neatness, work completion, diagrams, concept maps, flow charts, graphs, activities, and timely submission.

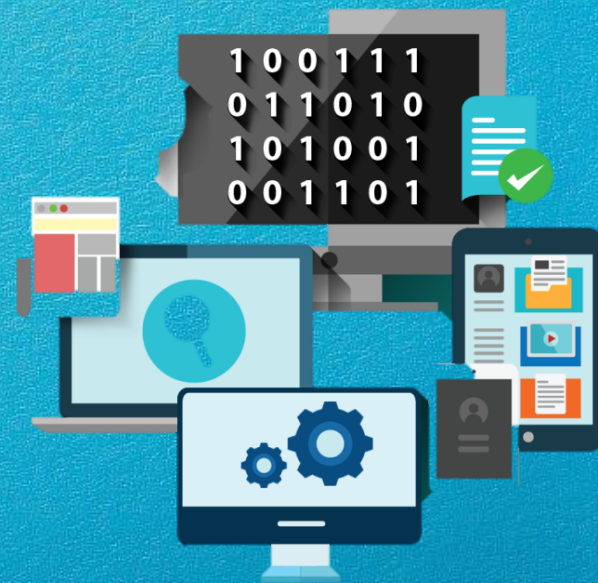


CO-SCOLASTIC AREA



ART EDUCATION

- ❖ Grading will be done on a 5 point scale (A-E) as per the CBSE norms.



HEALTH AND PHYSICAL EDUCATION

(Including Work Experience)

- ❖ Grading will be done on a 5 point scale (A-E) as per the CBSE norms.



SCHOOL DISCIPLINE

- Students will be assessed for discipline based on the following factors:
 - Attendance
 - Sincerity
 - Behaviour
 - Values
 - Tidiness
 - Respectfulness for rules and regulations
 - Attitude towards society, nation and others
- It will be done on a 5-point grading scale ranging from A-E.



Thank you

