

**INDIAN SCHOOL SOHAR
SUMMATIVE ASSESSMENT-II
SCIENCE**

No. of printed pages -2

**CLASS-VII
1.3.15**

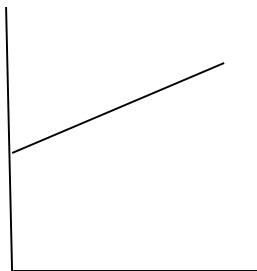
**TIME :- 2 HRS
MM:60**

GENERAL INSTRUCTIONS :-

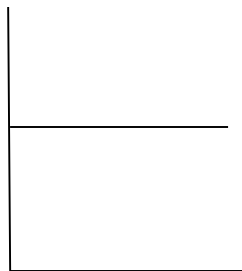
1. Questions 1 to 10 are multiple choice questions -1 mark each.
2. Questions 11 to 16 are very short answer type questions -1 mark each.
3. Questions 17 to 23 are short answer type questions -2 marks each.
4. Questions 24 to 28 are short answer type questions -3 marks each.
5. Questions 29 to 31 are long answer type questions- 5 marks each.

Q .Choose the most appropriate answer.

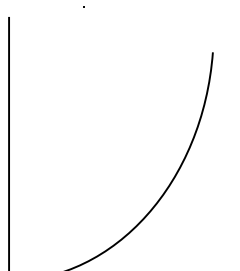
1. The heart chamber that pumps blood to the body organs.(except lungs)
a) right auricle b) right ventricle c) left auricle d) left ventricle
2. Which of the following offers the least resistance to electric current?
a) steel b) nichrome c) copper d) aluminium
3. Roy looked into the mirror by placing it close to his face. The image of his face was found to be erect & magnified. Thus the mirror must be
a) concave b) convex c) plane d) none of these
4. A modified stem of onion is
a) bulb b) corm c) rhizome d) radicle
5. 36 Km/hr is same as
a) 36 m/s b) 3.6 m/s c) 10 m/s d) 0.36 m/s
6. Atmospheric pressure is not affected by
a) altitude b) temperature c) water vapour d) light
7. Spores: Asexual : : _____ : Sexual reproduction.
a) buds b) fragments c) gametes d) tuber
8. Which one of the following develops from a thunderstorm & rotates violently ?
a) cyclone b) tornado c) typhoon d) lightning
9. Living things & the environment together constitute the
a) ecosystem b) food chain c) atmosphere d) food web
10. Which of the following distance-time graph shows non-uniform motion of a truck?



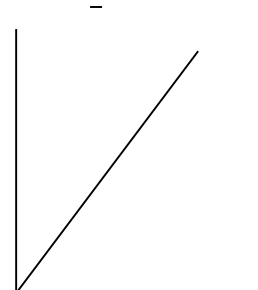
a)



b)



c)



d)

11. What is vermicomposting?
12. When Ram focused the sun rays on a paper using magnifying glass, the paper started burning. Why?
13. a) Which substance found in the blood entering the left auricle, is not present in the blood entering the right auricle. b) In case of a damaged kidney, which process is recommended by the doctors to remove wastes from the body?
14. An image of a pencil is observed on a plane mirror. The distance between the mirror & the image is 15m. If the pencil is moved 2.5 m towards the mirror, then what would be the distance between a) the image & the pencil? b) the mirror & the pencil?
15. What is an electric fuse made up of?
16. Name any two appliances in which electromagnets are used.
17. State the cause & effect of eutrophication.
18. How does uneven heating between the equator & the poles cause winds to blow?
19. Differentiate between R.B.C. & W.B.C. (2 points)
20. Why nichrome wire is used in electric toasters, electric iron etc. (2 points)
21. How can the magnetic field be made stronger in an electromagnet? (2 points)
22. A food chain can also be called as an energy flow chain. Justify the statement.
23. Will pollen germination take place if pollen of rose gets deposited on stigma of lily flower? Why?
24. List any three precautions to be taken in case of a cyclone warning.
25. What are the regulatory functions of forests. (3 points)
26. Name & draw diagram of the spherical mirror which generally forms a real image but occasionally a virtual image. State any three uses of such a mirror.
27. What is done in the following steps of sewage treatment? a) screening b) digestion c) chlorination.
28. a) The distance between two stations is 1995 Km. How much time will a car take to cover this distance at an average speed of 19 Km/hr? b) Name two ancient time measuring devices.
29. State how eye lens & optic nerves help in image formation in the human eye. Draw a labeled diagram to support your answer.
30. How is permanent hardness of water caused? How is it removed?

OR

- a) What is temporary hardness of water? Suggest & explain a method to remove such hardness.
- b) State any two disadvantages of hard water with reasons.
31. a) Explain how blood is circulated in the body.
- b) Label the marked parts of the given diagram of structure of human heart.

