

INDIAN SCHOOL SOHAR
SUMMATIVE ASSESSMENT – I

Subject: Science

Class: VI

Total Marks: 60

Date: --/09/15

Time: 2 hours.

GENERAL INSTRUCTIONS

This question paper contains 32 questions. Read the instructions carefully and answer.

- 1. Questions 1 to 10 are multiple choice questions carrying 1 mark each.**
- 2. Questions 11 to 18 very short answer type questions carrying 1 mark each.**
- 3. Questions 19 to 24 short answer type questions carrying 2 marks each.**
- 4. Questions 25 to 29 long answer type questions carrying 3 marks each.**
- 5. Questions 30 to 32 very long answer type questions carrying 5 marks each.**

I. Choose the appropriate answer from the option given below:

1x10=10

1. Potato is an edible.
a) stem b) root c) leaf d) seed
2. Water soluble vitamins are.
a) Vitamin A & C b) vitamin B & C c) vitamin B & E d) vitamin A & D
3. The process of soaking jute stem in water to let those rot.
a) knitting b) ginning c) picking d) retting
4. The chemical formula of water is.
a) H₂S b) H₂O c) HCl d)HNO₃
5. A physical change is
a) usually reversible b) irreversible c) always irreversible d) reversible.
6. Which of the following liquids are immiscible liquids?
a) water & milk b) water & honey c) water & juice d) water & oil
7. The basic structural and functional unit of life.
a) molecule b) atom c) tissue d) cell
8. The male reproductive part of a flower.
a) stamen b) pistil c) sepal d) petal.
9. Insectivorous plants like pitcher plant grow in soil deficient in.
a) water b) nitrogen c) clay d) humas
10. The method of separation used at construction sites to separate sand and gravel
a) sieving b) winnowing c) threshing d) hand picking

II. Give one or two word for the following:

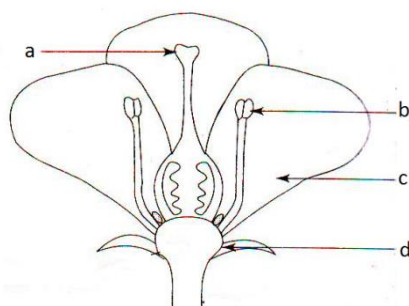
1x8=8

11. The root that arises as a tuft from the base of the plant.
12. The process of producing the young ones of their own kind.
13. A change in which original substance can be recovered.
14. Materials that partially allow the light to pass through them.
15. The process of removing fleece from sheep.
16. The component retained in the filter paper after filtration.
17. Organisms that depends on other organism for their food.
18. A condition caused by the excess loss of water from our body.

III. Very short answer type questions:

2x6=12

19. Why is food important for living beings? (2 points)
20. Sugar is dissolved in two beakers containing (a) Coldwater (b) Hot water.
In which beaker sugar is dissolved more? Why?
21. Label the following parts of the flower:-

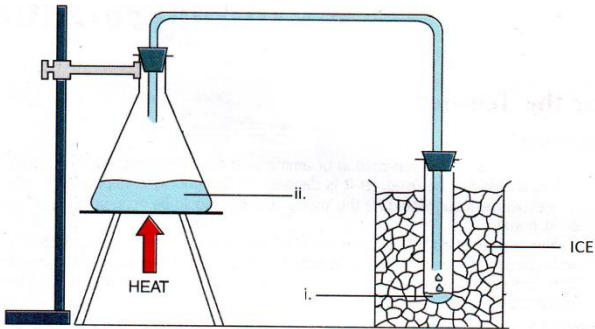


22. Give reasons:
- Cotton is called breathing fabric.
 - Jute is called golden fibre.
23. State whether the following changes are physical or chemical.
- Boiling egg
 - Straight wire to coiled
 - Digestion of food
 - Dissolving salt in water
24. Mention the functions of thorn in cactus plants. (2 points)

IV. Short answer type questions:

3x5=15

25. Distinguish between parallel venation and reticulate venation. (3 points)
26. a) Define (i) Spinning (ii) Ginning.
b) Write any two advantages of synthetic fibres.
27. The apparatus shown below can be used to obtain pure water from salt water



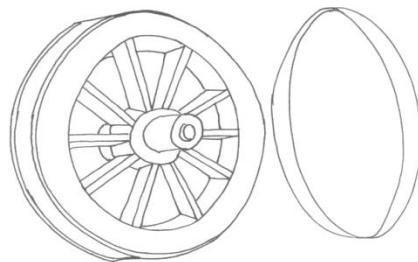
- Label the parts i and ii.
- Why is it necessary to use ice?
- What is this method of separation called?

28. a) How is kwashiorkor caused? Write any two symptoms of kwashiorkor.
b) Tina wants to test the food for protein. Which chemicals she will need for the test?
29. a) Wooden cork will float; stone will sink. Give reason. (1 points)
b) Mention any two benefits of classification.

V. Long answer type questions:

5x3=15

30. a) Name the method of separation used in the following situations:
- Separating water and mustard oil.
 - Separating rice from husk.
- b) Define: i) Loading. ii) Sieving.
- c) Why sponge is labeled as soft material?
31. a) State one function of the following:
- Prop roots
 - Xylem
 - Tendrils
 - Stomata
- b) Draw a neat diagram of a leaf. Name and label the part that:
- is flat and broad.
 - forms network of thin lines.
 - runs in the middle.
 - connects leaf to stem
32. a) Give reasons:
- Milk in a saucepan overflows when heated.
 - Silver article gets a black coating when exposed to air.
- b) By observing the given figure, explain how the metal rim is fixed to the wooden cart wheel. (3 points)



*****END*****