



INDIAN SCHOOL SOHAR
SUMMATIVE ASSESSMENT – II

Subject: Science

Class: VI

Date: 13/03/16

Total Marks: 60

Time: 2 hours.

GENERAL INSTRUCTIONS

This question paper contains 25 questions. Read the instructions carefully and answer.

- 1. Questions 1 to 5 are very short answer type questions carrying 1 mark each.**
- 2. Questions 6 to 14 are short answer type questions carrying 2 mark each.**
- 3. Questions 15 to 23 are long answer type questions carrying 3 mark each**
- 4. Questions 24 & 25 very long answer type questions carrying 5 mark each.**

I. Very short answer type questions:

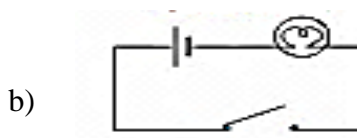
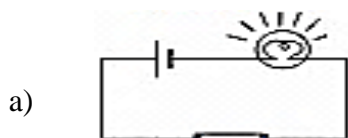
1x5=5

1. Why do we need to segregate waste into biodegradable and non-biodegradable?
2. Mention any two motions shown by the earth revolving around the sun?
3. Why are trees in mountain region, conical in shape?
4. What is the speed of light?
5. Draw the symbol of cell and switch.

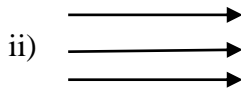
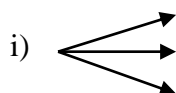
II. Short answer type questions:

2x9=18

6. What is rain water harvesting? Mention any two ways by which it can be done.
7. Enumerate any two functions of the skeletal system.
8. Differentiate clearly between the following pairs;
a) Roots of cactus and lotus plants b) Leaves of mountain plant and tropical rain forest.
9. Mention any two properties of magnets.
10. Distinguish between the following electric circuits a and b: - (2 points)



11. Give reasons:
a) Patient fitted with pace maker should not go for security check.
b) Credit cards and ATM cards should not be placed near magnets.
12. a) A girl of 120 cm tall stood 3 m away from a long mirror. (The girl was facing the mirror)
Using this information complete the following sentences.
i) The distance between the girl and the image _____.
ii) The height of the image is _____.
b) Name the following rays:



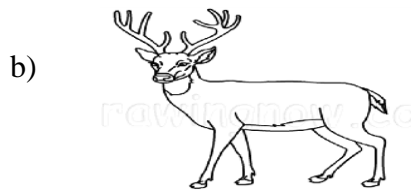
13. Define the following:
a) Humidity b) Atmosphere
14. a) What is vermicomposting?
b) Name the two types of organic substances from which compost may be formed?

III. Long answer type questions:

3x9=27

15. Differentiate between primary and secondary cell. (3 points)
16. Explain how lunar eclipse is formed with the help of a neat labeled diagram.

17. Identify the organisms and write in which regions they are found?
Write any two adaptive features of them.

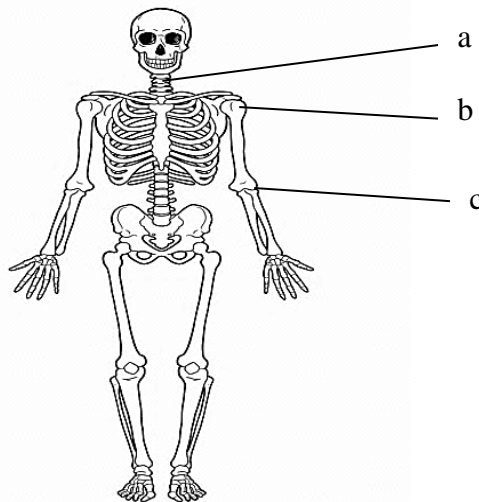


18. i) How are the following parts useful for birds in flying?
a) Feathers b) Hollow bones c) Chest muscles
ii) State one function of the following:
a) Setae in earth worm b) Swim bladder in fish c) Scales in snake
19. Observe the picture and answer the following questions.



- a) Name the device shown in the picture.
b) Mention its use.
c) Why is its case made of aluminum?

20. a) What is parallax error ?
b) Mention the type of motion shown by the following body.
(i) Movement of a string of a guitar (ii) A giant wheel
c) Fill in the blanks:
(i) 1 ton = _____ kg (ii) 1 millennium = _____ years
21. In the given figure identify the joints a, b, c and write their movements.



22. a) Explain the three R's of waste management using examples.
What is fourth R in waste management and why is it important?
b) Hani's mother works in an office. On her way home, she usually buys vegetables from the market. She uses jute bags to carry vegetables.
i) Why does she use jute bags?
ii) What is the value shown by her?
23. a) What are the advantages of SI system? (2 points)
b) If you are given an elastic tape will you be able to measure the length of the table accurately?
Justify your answer.

IV. Very long answer type questions:

5x2=10

24. Describe an activity to prove that one fifth of the air occupies oxygen.
25. Explain water cycle with a neat labeled diagram.

*****THE END*****