

INDIAN SCHOOL SOHAR
SUMMATIVE ASSESSMENT-2
SUBJECT:-SCIENCE

CLASS: VIII

MARKS:-90

DATE: 12.03.17

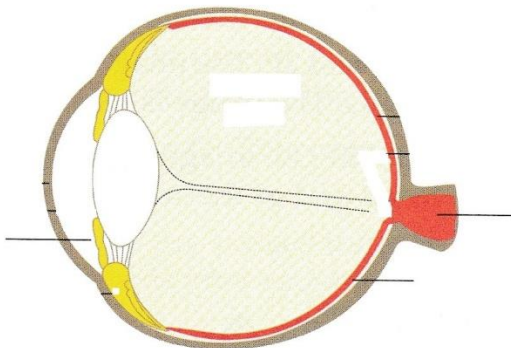
TIME:- 3 HRS

GENERAL INSTRUCTIONS:

1. The Question paper comprises of two sections-A and B. Attempt both these sections separately.
2. Q.1 to 3 - Section-A are very short answer type questions -1 mark each.
3. Q.4 to 6 - Section-A are short answer type questions-2 marks each.
4. Q.7 to 18 - Section-A are short answer type questions- 3 marks each.
5. Q.19 to 24 - Section-A are long answer type questions- 5 marks each.
6. Q. 25 to 33 - Section-B are activity based multiple choice questions-1 mark each.
7. Q. 34 to 36 - section-B are questions based on practical skills- 2 marks each.

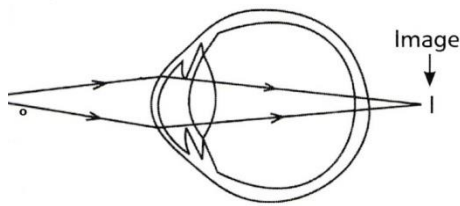
SECTION-A

1. Calculate the number of images seen when two plane mirrors are inclined at an angle of 30° to each other.
2. Name the force due to which
 - a) electrons revolve around the nucleus.
 - b) protons and neutrons are held in the nucleus.
3. Why does light change its direction while travelling through different mediums?
4. Given below are the situations that could result due to insufficient or lack of a certain hormone. Identify the hormone and the endocrine gland responsible for its production.
 - a) Blood sugar level remains high, increased thirst and hunger.
 - b) Person has abnormally short stature.
5. a) What are also known as mini planets? Where are they found?
 b) What is the theory behind the formation of these heavenly bodies?
6. Draw a ray diagram to show the image formation by a convex lens, when the object is kept at $2F$. What is the size of the image formed?
7. Give reasons-
 - a) Pole star appears to be stationary in the sky.
 - b) comets have tail.
 - c) Venus is the hottest planet.
- 8) a) How is an earthquake caused? b) Define the term epicentre.
- 9) Label the given parts of the eye and state their function.

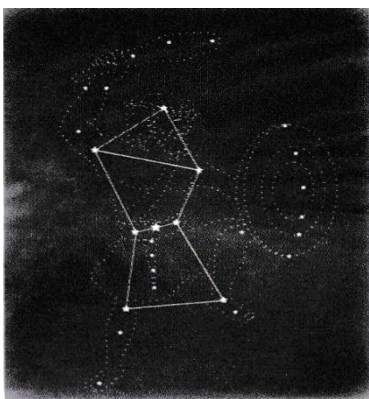


- 10) Explain, how are the following air pollutants harmful? 1) CO 2) CFC 3) CO₂.
- 11) What do you mean by the frequency of a vibrating object? How is it related to shrillness of sound?
- 12) State the cause and effects of eutrophication.

- 13) Give three situations where it is desirable to increase friction.
- 14) Differentiate between charging by friction, by conduction and by induction. (1 point each)
- 15) List the objectives of Ganga Action Plan . (3 points)
- 16) a)Where do ductless glands pour their secretions?
 b) Name the emergency hormone. Why is it so called?
 c) What is ovulation?
- 17) a) What type of vibrations produce noise? (2 points)
 b) Mention any 4 measures to be taken to control noise pollution.
- 18) a) Our bodies can withstand the atmospheric pressure .Justify the statement.
 b) What force acting on an area of 0.5m^2 will produce a pressure of 500 Pa ?
 c)Where is the pressure greater-10m below the surface of the sea or 20m below? Why?
- 19. a) Identify & define the defect of vision represented in the following figure:



- b) Explain how is it caused?
- c) Draw a figure to show the corrected eye by using a suitable lens.
- 20.a) What is electroplating?
- b) List two uses of electroplating giving the reason in each case.
 c) Draw a well labeled diagram to show electroplating of copper on iron nail.
- 21. a) How is TajMahal discoloured? (2 points)
 b) List any three steps that have been taken to protect the monument.
 c) Why is it important to protect TajMahal?
- 22. a) Draw a well labeled diagram of a gold leaf electroscope.
 b) On what principle does it work?
 c) What are its uses?
- 23. a) Identify and describe the given picture. (3 points).



- b) What is a light year? Give its value.
- 24. a) Discuss how friction responds to different types of surfaces and different masses of objects?
 b) 1. When you hold a bag in your hand above ground, which two forces act on it?
 2. What is the net force acting on the bag? Justify your answer.
 3. What are such forces known as?

SECTION-B

25. When light passes through a prism, it is
a) deviated and dispersed
b) deviated but not dispersed
c) laterally displaced
d) reflected
26. The image formed by a plane mirror is
a) virtual, erect, small
b) virtual, erect, same size
c) virtual, inverted, same size
d) real, erect, same size
27. During electroplating, the metal on which electroplating is to be done is placed at
a) anode
b) cathode
c) electrolyte
d) solution
28. Which of the following is not a conductor of electricity?
a) tap Water
b) salt Water
c) distilled Water
d) lime juice
29. Which of the following cannot be charged by friction, if held by hand?
a) a plastic scale
b) a copper rod
c) an inflated balloon
d) a woolen cloth
30. Sound travels faster in
a) air
b) water
c) steel
d) vacuum
31. Which of the following are used to reduce friction?
a) ball Bearings
b) sand
c) grooved tyres
d) grinding Stone
32. The pressure _____? _____ with an increase in area of contact.
a) increases
b) decreases
c) does not change
d) none
33. Mohit observes that distance between the plane mirror and his image is 5m. If he moves 1m towards the mirror, the distance between him & his image will be
a) 8m
b) 5m
c) 4m
d) 10m
34. State two changes observed during electrolysis of copper chloride.
35. Under what conditions:
a) light rays bend towards the normal?
b) light rays bend away from the normal?
c) light rays suffer no deviation?
d) refraction takes place in the same medium?
36. How is it possible to increase the:
a) time-period of a pendulum?
b) frequency of a stringed instrument?
-