



INDIAN SCHOOL SOHAR
TERM-II EXAMINATION 2017-18
SUBJECT-SCIENCE
CLASS-VIII

Date-11/03/18

Maximum marks-80 Duration- 3 Hours

General instructions-

- I. All questions are compulsory.
 - II. Question numbers 1 to 2 are one mark questions. To be answered in one word or in one sentence.
 - III. Question numbers 3 to 11 are two marks question. To be answered in 30 words each.
 - IV. Question numbers 12 to 21 are three marks question. To be answered in 50 words each.
 - V. Question numbers 22 to 27 are five marks question. To be answered in 70 words each.
 - VI. There is no overall choice. However, an internal choice is provided in one question of 3 marks and one question of 5 marks.
-

1. Define antibiotics.
2. Mention two chemical properties of metals.
3. How does sugar help in food preservation? Give two examples of food that can be preserved using sugar.
4. Write the factors that affect liquid pressure. (Any two)
5. The following figure shows a man with a parachute. Name the force which is responsible for his downward motion. Will he come down with the same speed without the parachute?



6. A father and son pushed their car to bring it to the side of the road as it had stopped in the middle of the road. They experienced that although they had to push with all their strength initially to move the car, the push required to keep the car rolling was smaller, once the car started rolling. Explain.
7. State two methods of reducing friction.
8. Two astronauts are floating close to each other in space. Can they talk to each other without using any special device? Give two reasons.
9. List two sources of noise pollution and suggest two measures to limit noise pollution in your locality.

10. Give reason for the following-

- Clouds acquire charges.
- Lightning conductors are installed on roof tops.
- The gold leaves in electroscope move away from each other when a charged object is brought near it.
- During lightning we are advised to squat low on the ground.

11. Electrical charges are of two types. State the types and also mention how they interact.

12. In a simple circuit consisting of bulb, cell and conducting wire, the bulb glows when an iron nail is placed between two ends of wire. Complete the following on the basis of this fact.

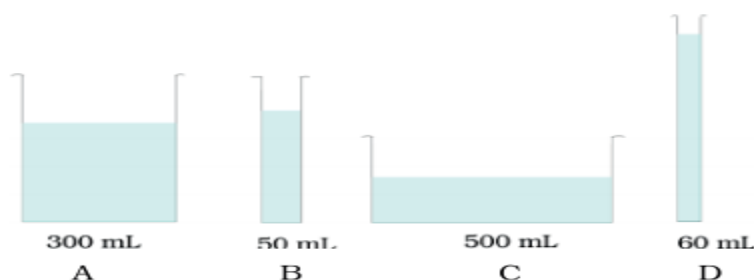
- _____ is a metal.
- Metals are good _____ of electricity.
- If in the circuit iron nail is replaced by a wooden stick, will the bulb glow or not? Justify your answer.

13. Give suitable word for each of the following statements.

- The site which responds to a hormone.
- The system that is responsible for the secretion of hormones.
- It marks the beginning of reproductive period.
- Glands responsible for eruption of acne and pimples.
- The disease caused due to the deficiency of iodine in our diet.
- The growing voice box in boys.

14. Observe the vessels A, B, C and D shown in the figure below carefully. Volume of water taken in each vessel is as shown against each figure.

- Arrange them in the order of decreasing pressure at the base of each vessel. Explain.
- Give the formula of Pressure.



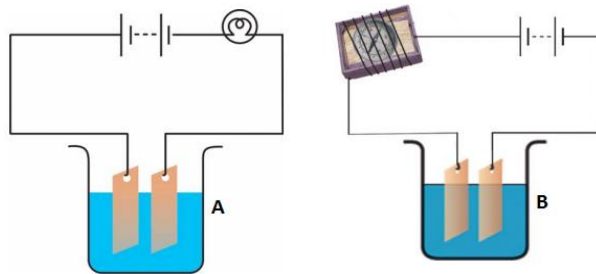
15. A marble is allowed to roll down an inclined plane from a fixed height. At the foot of the inclined plane, it moves on a horizontal surface (a) covered with silk cloth (b) covered with a layer of sand and (c) covered with a glass sheet. On which surface will the marble move –(i)the shortest distance and (ii) the longest distance. Give reason for your answer. Arrange the surfaces into increasing order of friction experienced by the ball.

16. Differentiate between the following-(one point each)

- Amplitude and frequency.
- Noise and music.
- Audible and inaudible sound.

17. Observing that the bulb does not glow in figure A, Geeta changed the circuit as shown in the figure B. She observed deflection in the magnetic compass.

- What does the deflection in magnetic compass indicate?
- Why did the bulb not glow in figure A?
- What would be the effect of increase in the number of the turns in the coil around the magnetic compass in figure B?

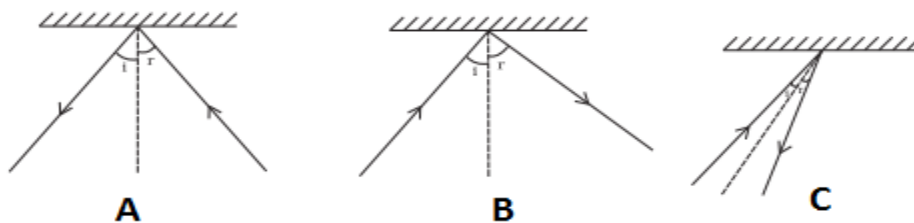


18. There was a news about a recent earth quake ,Sita after reading the newspaper decided to volunteer to go to the nearest village and speak about it.

- (a)Mention two precautions that should be taken when inside the house during an earth quake.
- (b)What value is exhibited by Sita?

19. There is a mistake in each of the following ray diagrams given in the figure A, B and C .

- (a) Point out the error in each case.
- (b) Draw a neat labelled sketch of the correct diagram.



OR

Differentiate between diffused and regular reflection (two points). Illustrate with neat diagram.

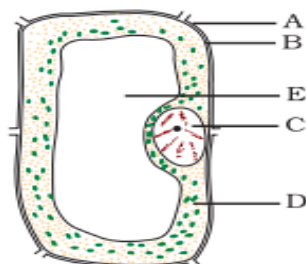
20. Suppose the distance between earth and sun becomes half of its present distance. What is likely to happen to life?

21. Match the items of **Column A** with those of **Column B**.

Column A	Column B
(a) sulphur dioxide	(i) solar, wind, water, etc.
(b) carbon dioxide	(ii) reduces oxygen-carrying capacity in blood
(c) carbon monoxide	(iii) safe for drinking.
(d) chloro-fluro-carbons	(iv) greenhouse gas
(e) alternative fuel source	(v) damage ozone layer
(f) potable water	(vi) acid rain

22. Observe the diagram given below and answer the following-

- (a) Does it represent a plant cell or an animal cell?
- (b)Does it represent a prokaryotic cell or an eukaryotic cell?
- (c) Label A, B, C, D and E in the diagram. Give the function of any four.

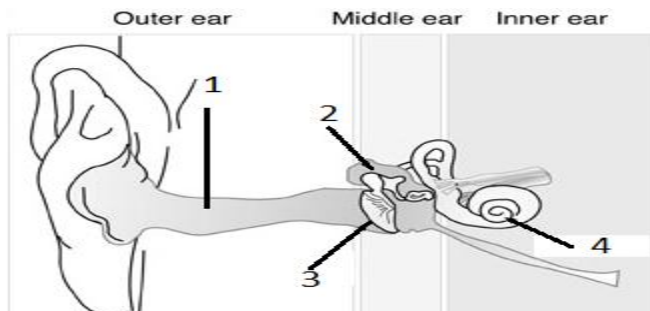


23. Name the following-

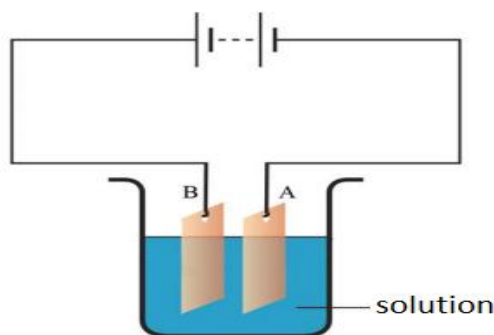
- (a) Hormone that regulates sugar metabolism.
- (b) Endocrine gland that controls salt balance in the body.
- (c) Hormone that is released when a person is frightened.
- (d) Hormone responsible for metamorphosis in tadpoles.
- (e) Hormone responsible for secondary sexual characters in boys.

OR

Label the parts in the following diagram and state the function of any three.



24. Observe the circuit given below. Sunil set up this circuit for purification of copper. What will be the nature of – (i) plate A (ii) plate B (iii) the solution. Explain the process.



25. Draw a neat diagram of the human eye and label the following-

- (a) Screen of the eye.
- (b) The opening that regulates the amount of light into the eyes.
- (c) The muscle that holds the lens.

26. Write one special feature of the following-

- (a) Mercury
- (b) Venus
- (c) Jupiter
- (d) Saturn
- (e) Pluto

27. “CO₂ contributes to global warming.” Explain. Write three consequences of global warming.
