



**INDIAN SCHOOL SOHAR**  
**TERM I EXAMINATION (2018– 19)**  
**SCIENCE**

**CLASS: VII**  
**DATE: 27/09/2018**

**MAX.MARKS: 80**  
**DURATION: 3 HRS**

**GENERAL INSTRUCTIONS:**

- a. The Question paper has 27 questions in all. All questions are compulsory.
- b. There is an internal choice of one question of three marks and one question of five marks.
- d. Question number 1 and 2 carry 1 mark. They are to be answered in one word or in one sentence.
- e. Question numbers from 3 to 11 carry 2 marks. These are to be answered in 30 words each.
- f. Question numbers from 12 to 21 carry 3 marks. These are to be answered in 50 words each.
- g. Question numbers from 22 to 27 carry 5 marks. These are to be answered in 70 words each.

1. What is meant by reeling of silk? (1)
2. Mention the normal temperature of human body? (1)
3. Glen observed cows and buffaloes swallow their food hurriedly and then sit restfully and chew their food. Can you help him by stating the reason behind this? (2)
4. Draw a neat labeled diagram of stomata and mention any one function of it. (2)
5. Name the acid which is present in the following natural sources. (2)
  - a) Spinach
  - b) Curd
  - c) Vinegar
  - d) Grapes.
6. Cold water is taken in two identical cans. One is painted white and the other painted black. (2)



- a) What do you observe on keeping the cans in the sun for 15 minutes? Give reason.
  - b) Give one practical application of this principle.
7. Mention any four types of silk. (2)
  8. Give reason: a) Siberian cranes migrate. (2)  
 b) Red-eyed frog has sticky pads on his feet.
  9. Hani conducted an experiment in the field related to the rate of percolation. (2)  
 She observed that it took 40 minutes for 200ml of water to percolate through the soil sample. Calculate the rate of percolation.
  10. Justify the following: a) Brinjals and potatoes are soaked in water when cut. (2)  
 b) Lime water turns milky when CO<sub>2</sub> is passed through it.
  11. Refer the activity shown below and answer the following: (2)



- a) Why does the can get crushed?
- b) Why is warm air lighter than the cold air?

12. Complete the table to show the change in colours of indicators in different media. (3)

INDICATOR	COLOUR IN ACIDIC MEDIUM	COLOUR IN BASIC MEDIUM
BLUE LITMUS	RED	(A)
RED LITMUS	(B)	BLUE
PHENOLPHTHALEIN	COLOURLESS	(C)
CHINA ROSE	(D)	(E)
TURMERIC POWDER	(F)	RED

13. Write any two adaptive features of the following animals. (3)

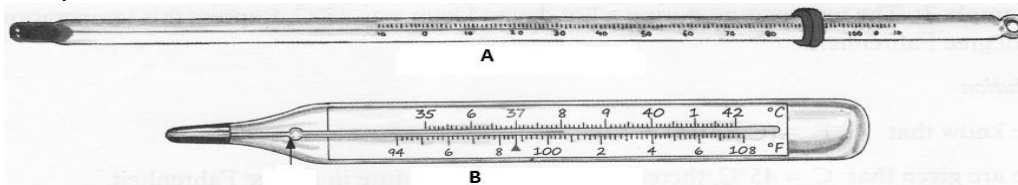
- a) Polar bear      b) Toucan bird      c) Elephant

14. Write any two differences between sandy soil, loamy soil and clayey soil. (3)

15. How is thunderstorm caused? (3)

16. a) Identify the types of thermometers A and B shown in the figure below. (3)

b) State any two differences between them.



17. Write any three safety measures to be taken during cyclones. (3)

18. Classify the changes involved in the following processes as physical or chemical: (3)

- a) Burning of a candle.                      b) Breaking a plastic ruler.  
 c) Rusting of iron                              d) Freezing of water into ice.  
 e) Ripening of fruits.                          f) Crystallisation of copper sulphate.

19. Look at the picture given below and answer the following questions. (3)



- a) Identify the plant given above.  
 b) What modification is observed in the leaf of the plant?  
 c) Why do they trap insects?

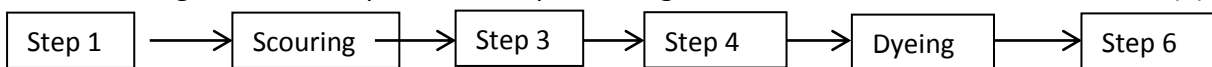
20. Give reason: (3)

- a) Air conditioners are fitted at a higher level in the room.  
 b) Woollen clothes keep us warmer in winters than cotton clothes.  
 c) Metallic pans have wooden handle.

21. Draw a neat labeled diagram of life cycle of silk moth. (3)

OR

The flow chart given below represents the processing of fleece into wool. (3)



- a) Identify the processes in step 1, step 3, step 4 and step 6.  
 b) Mention any two properties of silk.

22. a) Differentiate between land breeze and sea breeze. (5)

b) Define i) Conduction ii) Convection.

23) a) Draw a neat labeled diagram of soil profile. (5)

b) Mention the importance of top soil. (One point)

24. a) Give reason: (5)

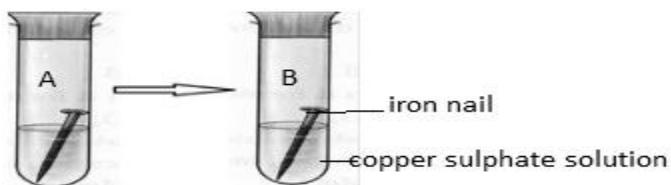
i) A person suffering from acidity takes antacid tablets.

ii) Apply baking soda to the ant bitten area.

b) What is neutralization reaction? Give one example.

c) A farmer was unhappy because of his low crop yield. He discussed the problem with an agricultural scientist and found that the soil was acidic. What remedy would the scientist suggest to the farmer to get good yield.

25. Observe the figure given below and answer the following questions. (5)



a) Name the type of change taken place in the above reaction.

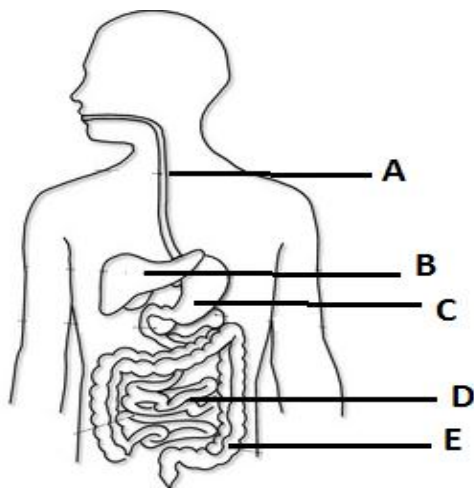
b) What is this reaction called?

c) Write the equation for the reaction.

d) Mention the colour of the solution in test tube A and B.

e) What is the change observed on the nail in test tube B?

26. Identify the parts A, B, C, D & E in the given figure and mention any one function. (5)



27. a) Define photosynthesis. (5)

b) Write the chemical equation for the photosynthesis.

c) Mention any two importance of photosynthesis.

**OR**

a) Explain the symbiotic association in Lichens?

b) Why do farmers grow leguminous plants alternately with other crops?

\*\*\*\*\*THE END\*\*\*\*\*