



INDIAN SCHOOL SOHAR
PERIODIC TEST II (2018 – 19)
SCIENCE

CLASS: VIII

DATE: 10 /01/2019

MAX.MARKS: 20

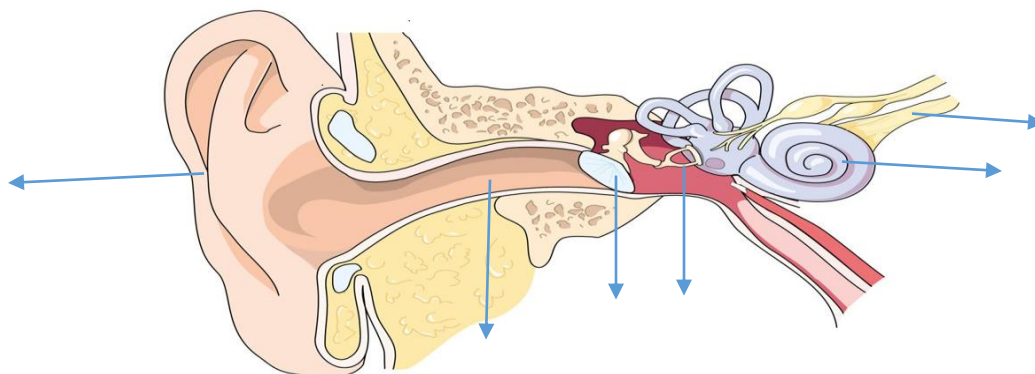
DURATION: 45 MINS

General Instructions:

*The question paper has 9 questions in all. All questions are compulsory.

* Marks are indicated against each question.

- 1.State any two characteristics of chemical changes brought about by the chemical effect of electric current.
- 2.When acidified water is electrolysed, what is produced at 1) positive electrode 2) negative electrode?
3. a) What is the audible range of sound in humans ?
 b) Compare the roaring of a lion and chirping of a bird in terms of pitch.
4.) a)Suggest any two devices which can be used to detect weak current flowing through a liquid in an electric circuit.
 b) Which effect of electric current is utilized for detecting the flow of electric current through a solution in a circuit 1) when a compass is used 2) when a torch bulb is used?
5. The sound from a mosquito is produced when it vibrates its wings at an average rate of 500 vibrations per second. What is the time period of the vibration?
6. Why are the following metals suitable for electroplating ?(Give one property and one use for each)
 a) chromium b) tin c) gold .
7. What is noise pollution? Suggest any two measures to control noise pollution.
8. a)What is electroplating ?
 b) In the process of purification of copper metal,a thin plate of pure copper and a thick rod of impure copper are used as electrodes.
 Which electrode is connected to the 1) positive terminal and 2) negative terminal of the battery?
 Also name the metal solution used as electrolyte.
9. Label the marked parts of the given diagram.





INDIAN SCHOOL SOHAR
PERIODIC TEST II (2018 – 19)
SCIENCE

CLASS: VIII

DATE: 10 /01/2019

MAX.MARKS: 20

DURATION: 45 MINS

General Instructions:

* The question paper has 9 questions in all. All questions are compulsory.

* Marks are indicated against each question.

1. An electric current is passed through a conducting solution. List any two possible observations.
2. When acidified water is electrolysed, at which electrode:
 - a) oxygen is produced ?
 - b) hydrogen is produced ?
3. a) What is the inaudible range of sound in humans ?
 b) Compare the sound of a drum and a whistle in terms of pitch.
4. a) Suggest any two devices which can be used to detect weak current flowing through a liquid in an electric circuit.
 b) Which effect of electric current is utilized for detecting the flow of electric current through a solution in a circuit 1) when a torch bulb is used ? 2) when a compass is used?
5. A pendulum oscillates 60 times in 6 seconds. Find its frequency.
6. Why are the following metals suitable for electroplating ?(Give one property and one use for each)
 - a) zinc
 - b) silver
 - c) tin .
7. In the process of purification of copper metal, a thin plate of pure copper and a thick rod of Impure copper are used as electrodes.
 - a) Which electrode is connected to the 1) negative terminal and 2) positive terminal of the battery?
 - b) Which metal salt solution is taken as electrolyte?
8. What is noise pollution? Suggest any two measures to control noise pollution.
9. Label the marked parts of the given diagram.

