



**INDIAN SCHOOL SOHAR**  
**TERM II EXAMINATION (2018 -19)**  
**SUBJECT: SCIENCE**

CLASS: VIII

Max. Marks: 80

DATE: 12 /03/2019

Duration: 3Hrs

**General Instructions :-**

- i. The Question paper consists of **30** questions comprising four Sections- **A, B, C and D** .
- ii. **All** questions are compulsory.
- iii. Internal choice is given in Sections- **C and D**.
- iv. Question numbers **1 to 5** in Section-**A** are of **one** mark each. These are to be answered in one word or in one sentence.
- v. Question numbers **6 to 15** in Section-**B** are **two** marks each. These are to be answered in about 30 words.
- vi. Question numbers **16 to 25** in Section-**C** are **three** marks each. These are to be answered in about 50 words .
- vii. Question numbers **26 to 30** in Section-**D** are **five** marks each. These are to be answered in about 70 words each.
- viii. There is no overall choice. However an internal choice is provided in question number 19 and 23 of **3** marks and question number 26 and 29 of **5** marks. Attempt only one of the choices in such questions.

**SECTION-A**

1. Arrange the voice of the following in the order of increasing frequencies of sound- 1  
a girl, baby boy, a man, a woman.
2. What are antibodies ? 1
3. A plastic pen rubbed on dry hair, attracts tiny pieces of paper. Name the force involved and mention whether it is a contact or non-contact force . 1
4. An element X reacts with oxygen to form an oxide XO whose solution in water turns red litmus blue . Is X a metal or a non-metal? What is the nature of XO ? 1
5. How many images will be formed if a candle is kept between two plane mirrors placed: 1  
a) parallel to each other, separated by 30 cm?      b) at right angles to each other?

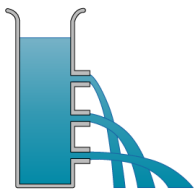
**SECTION-B**

6. What is the basis of the use of yeast in the baking industry for making breads and cakes? 2
7. When an electric current is passed through a cut potato for a considerable time, a coloured spot is formed around one of the electrodes: 2  
a) What is the colour of the spot ?  
b) Around which electrode ,the coloured spot is formed?  
c) Which effect of electric current is involved in this case ?
8. Explain briefly how an earthquake occurs . 2

9. Observe the given figures and give reasons :-

2

- a. The water rushing out from the hole C , reaches the farthest distance.
- b. It is difficult to pull the rubber sucker off the surface.



a



b

10. Name the following-

2

- a) The scientist who discovered fermentation.
- b) The causative microbe of Hepatitis A
- c) The bacterium which promotes the formation of curd.
- d) A biological nitrogen fixer .

11. a) An alarm clock is kept in a closed glass jar in which vacuum is created. Will the sound of the ringing alarm be heard ? Justify your answer.

2

b) Identify the vibrating parts of the following musical instruments-

1. Veena
2. Flute

12. Sam wants to deposit silver on an iron spoon. He took silver nitrate solution in a beaker and set up a simple electric circuit for electroplating.

2

- a) Which terminal of the battery should the spoon be connected to ?
- b) What material should the other electrode be made of ? Why ?

13. Name the hormone which would be released during the following situations. Also mention the endocrine gland which secretes them.

2

1. A frightened person
2. Development of tadpole to frog .

14. In the following cases, identify the object on which the force acts. Also state the effect of the force in each case.

2

- 1) Squeezing a piece of lemon between the fingers.
- 2) A batsman hitting a moving ball with his bat.

15. Define the terms- a. Time period b. Vibration

2

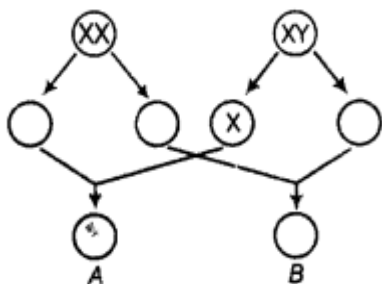
### SECTION-C

16. Mention the remarkable features of the following planets-

3

1. Uranus (1 point)
2. Saturn (2 points)
3. Venus (2 points)

17. Fill in the blank circles in the given figure and identify the sex of child A and B. 3



18. a) Sohan took a small amount of sulphur powder in a deflagrating spoon and heated it. 3  
 He collected the evolved gas in a glass jar and then dissolved the gas in water.  
 Write the reactions involved in the above activity in the form of chemical equations.  
 b) State two physical properties of copper that make it suitable to be used as electrical cables.
19. What precautions would you take if lightning occurs while you are outside the house? (3 points)

**OR**

19. What precautions are taken while designing buildings in seismic zones? (3 points)
20. State the laws of reflection of light with the help of a labelled figure. 3
21. a) White blood cells can squeeze through walls of blood vessels to fight against germs.  
 Which property of WBCs allows them to do this? 3
- b) How many pairs of chromosomes, human body cells contain? Where are chromosomes found in a cell? State their function.
22. What happens when excessive quantities of chemicals (fertilizers) reach the water bodies?  
 How does it affect the survival of aquatic organisms? 3
23. Discuss how friction responds to different types of surfaces and different masses of objects? 3

**OR**

23. a) A box is first pulled along the surface of a table. It is then moved by putting it on a collection of pencils. In which case would it be easier to move the box and why?  
 b) List any 3 factors on which drag depends.
24. Describe one significant effect of the following air pollutants on the environment- 3  
 1. CO<sub>2</sub>            2. CFCs            3. SO<sub>2</sub> and NO<sub>2</sub>
25. a) What kind of electric charges are generated by rubbing? 3  
 b) What is an electroscope used for?  
 c) What happens when we touch the metal top of a charged electroscope with hand?  
 What is this process known as?

**SECTION-D**

26. Discuss the threat to the beauty of Taj Mahal due to air pollution. Mention any 2 steps taken by the Supreme Court to save Taj Mahal. 5

OR

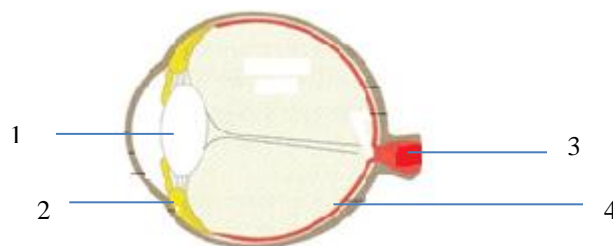
26. a) A recent study by WWF found that Ganga is one of the ten most endangered rivers in the world. Comment.

b) When was Ganga Action Plan launched? What was its main objective ?

27. a) "Friction is a necessary evil." Justify this statement by giving 4 suitable examples. 5

b) Why is sliding friction smaller than static friction ?

28. a) Label the marked parts of the structure of human eye. 5



b) Answer the following questions-

1. At which point of the eye, no vision is possible ? Give reason.

2. Eyes of the nocturnal birds have large pupil. How does this help them ?

3. Which part of the eye becomes cloudy in old age? What is this defect known as ?

29. a) Draw a figure to represent the constellation Orion. Also locate and label the brightest star using the figure. 5  
b) Describe the structure of Orion constellation. (3 points)

OR

29. a) Give reasons-

1. We can see different phases of the moon.

2. Meteors burn on entering into the atmosphere.

3. The stars appear to move from east to west.

b) Name any 2 artificial satellites and write their practical applications. (Any 2)

30. a) Draw neat diagram of a plant cell and label any 4 cell organelles. 5

b) Differentiate between a plant cell and an animal cell. (2 points)

-----