



INDIAN SCHOOL SOHAR  
TERM-1 EXAMINATION (2019-20)

No of printed pages: 2

CLASS: VI

اللغة العربية - ARABIC

MAX.MARKS: 40

DATE: 17 /09/19

DURATION: 1½ hrs.

- ❖ Write the answers on separate answer sheet provided.
- ❖ Please read all the questions before start writing the answers.
- ❖ Please check that this question paper contains 6 questions.
- ❖ Please write down the Serial Number of the question before attempting it.
- ❖ Marks are indicated against each question.

I. Join the following letters to form the words: -

15x½=7½

2. ل. س. ا. ن. =  
4. م. ن. د. د. ي. ل. =  
6. م. س. ل. م. =  
8. ق. ل. ب. =  
10. ج. م. ل. =  
12. ط. ف. ل. =  
14. خ. ر. و. ف. =

1. ب. ر. ا. ي. ة. =  
3. ا. ل. م. س. ج. د. =  
5. ف. ر. س. =  
7. م. ن. ه. ا. ج. =  
9. ف. ن. ج. ا. ن. =  
11. ث. ع. ل. ب. =  
13. ض. م. ا. م. =  
15. ش. ب. ا. ك. =

II. Translate the following sentences into Arabic: -

10x1=10

1. This is a fly. 6. That is a garden.  
2. That is a head. 7. That is an onion.  
3. That is a flower. 8. This is a rabbit.  
4. That is a bus. 9. This is a bicycle.  
5. This is bread. 10. That is a cow.

III. Fill in the blanks with suitable words:-

10x½=5

1. ذلك \_\_\_\_\_ 2. هذا \_\_\_\_\_ 3. هذه \_\_\_\_\_ 4. تلك \_\_\_\_\_  
5. ثعلب \_\_\_\_\_ 6. بقرة \_\_\_\_\_ 7. تلاجة \_\_\_\_\_ 8. ابريق \_\_\_\_\_  
9. تين \_\_\_\_\_ 10. ثوب \_\_\_\_\_

IV. Split the following words into letters:-

15x1/2=7 1/2

5. شجرة

4. بيت

3. ذنب

2. ذراع

1. رباط

10. مدرسة

9. ليمون

8. اسنان

7. كرسي

6. حمامة

15. قفل

14. سيارة

13. سمكة

12. اخوات

11. صحار

V. Write 10 words related to house in Arabic.

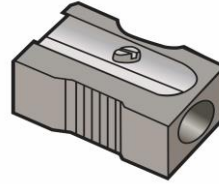
10x1/2=5

VI. Identify the following pictures and answer the following questions: (any 5)

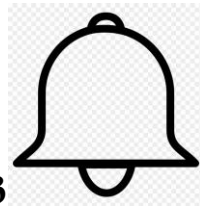
5x1=5



2. ما هذه ؟



1. ما تلك ؟



3. ما ذلك ؟

4. ما هذا ؟



6. من هو ؟



5. من هي ؟

@@@THE END@@@